

Quick Guide

NOTE You must have administrative privileges to install DiConnect Lite.

Step 1

Before installing DiConnect Lite, perform the 3 tasks below.

NOTE You must have administrative privileges to install and change these settings.

1. Set up IIS (Internet Information Services)
[IIS Setup Guide](#)
2. Install Microsoft SQL Server
[Microsoft SQL Server Installation Guide](#)
3. Set up a static IP address
[Static IP Address Setup Guide](#)

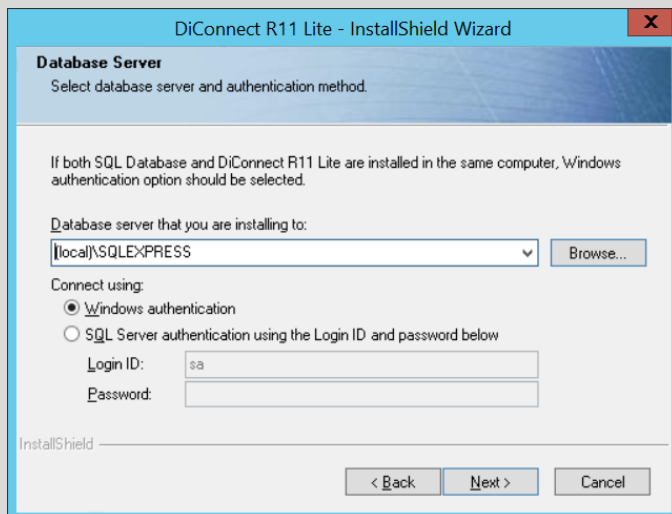
Step 2

To install DiConnect Lite, double-click **Setup.exe** to start the installation wizard.



Step 3

Accept the defaults on the wizard until the **Database Server** window is displayed, and then select the server that will store the DiConnect Lite database (or click **Browse** and locate the file). Next, select the connection method and then click **Next** to continue and finish.

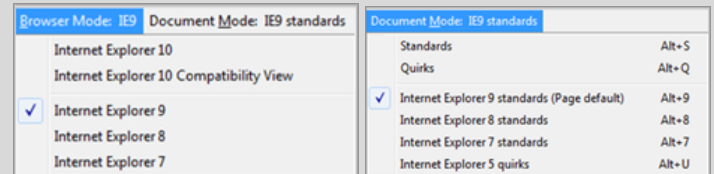


Step 4

When **Setup** is finished, click **Yes, I want to launch DiConnect R11 Lite now.** Next, change your web browser to IE 9: [DiConnect Lite Browser Compatibility.](#)

CHANGE IE 10 TO IE 9

Press F12, click **Browser Mode**, and then select **Internet Explorer 9**. Next, click **Document Mode** and then select **Internet Explorer 9 standards**.



CHANGE IE 11 TO IE 9

Press F12, and then click the **Emulation** icon. In the **Document mode** list, click **9**. In the **User agent string** list, click **Internet Explorer 9**.

