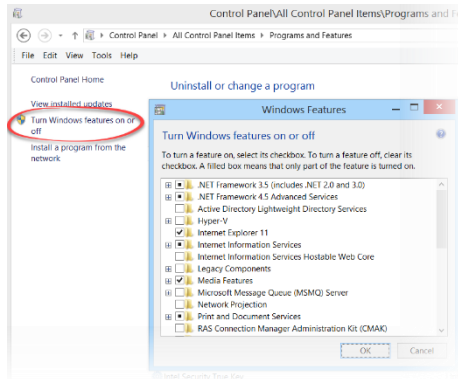


## IIS Setup

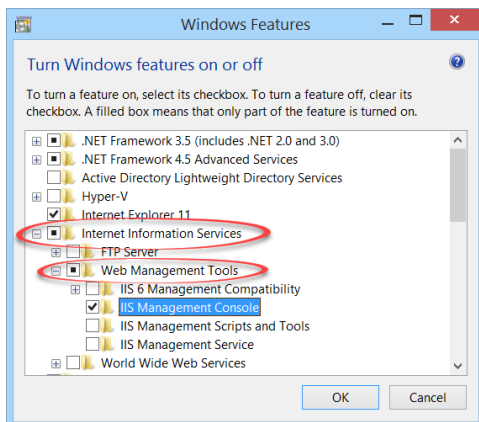
**NOTE** You must have administrative privileges to set up IIS (Internet Information Services). Please contact your system administrator.

### Turn on IIS

Step 1: Go to **Control Panel > Programs and Features**, and then click **Turn Windows features on or off** in the left-side menu.



Step 2: Expand **Internet Information Services > Web Management Tools**, select **IIS Management Console**, and then click **OK**.



### Connect to IIS

Step 3: Open your web browser and type **127.0.0.1** in the **Address bar**. If your browser displays IIS, congratulations! You can now continue with the next step to install DiConnect Lite.

