



Static IP Address Setup Guide

Copyright and Legal Disclaimers

Copyright © 2016 by DiCentral Corporation

All rights reserved. This document and all content that is contained, embedded and linked to this document, and that is written by DiCentral Corporation, or its partners or affiliates is copyright and bound by all copyright laws.

This document is the property of DiCentral Corporation and/or its affiliates and contains public information about proprietary products and/or services. All information contained herein is the property and exclusive copyright of DiCentral Corporation. No information within this document, nor information about the products or services described in this document, may be distributed or copied without the expressed written consent of DiCentral Corporation.

For further information, contact DiCentral Corporation.



Address: 1199 NASA Parkway
Houston, TX 77058
Phone: 281-480-1121
Website: www.dicentral.com

Contents

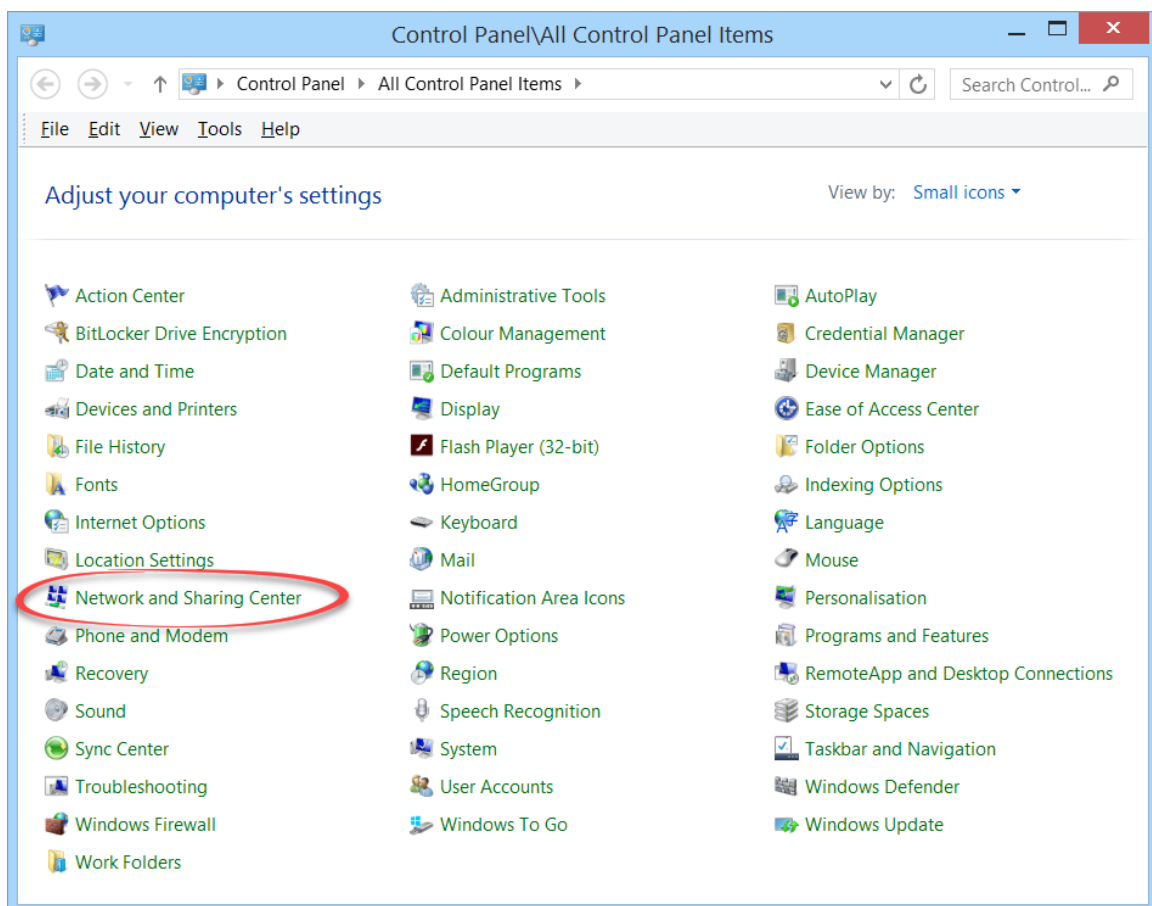
Copyright and Legal Disclaimers	2
Static IP Address Setup.....	4

Static IP Address Setup

Follow the steps below to set up a static IP address on your computer **before** installing DiConnect Lite.

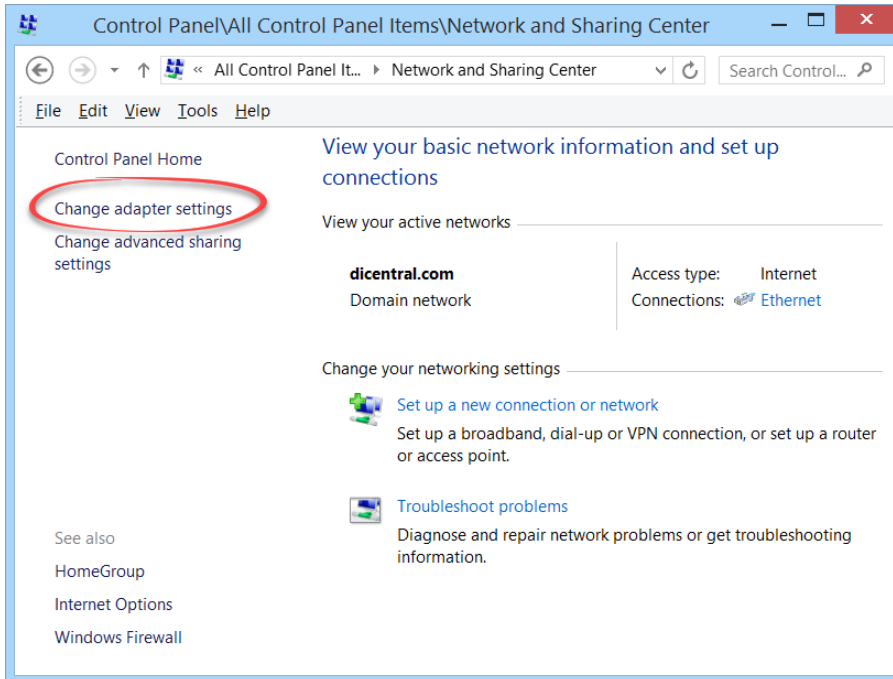
NOTE Static IP addresses must be assigned by your IT department or other designated network administrators. A static IP address must be manually entered into a device, along with a subnet mask, a gateway, and other domain information. Also, you must have administrative privileges to set up a static IP address.

1. Click the **Windows** button and navigate to the **Control Panel**.



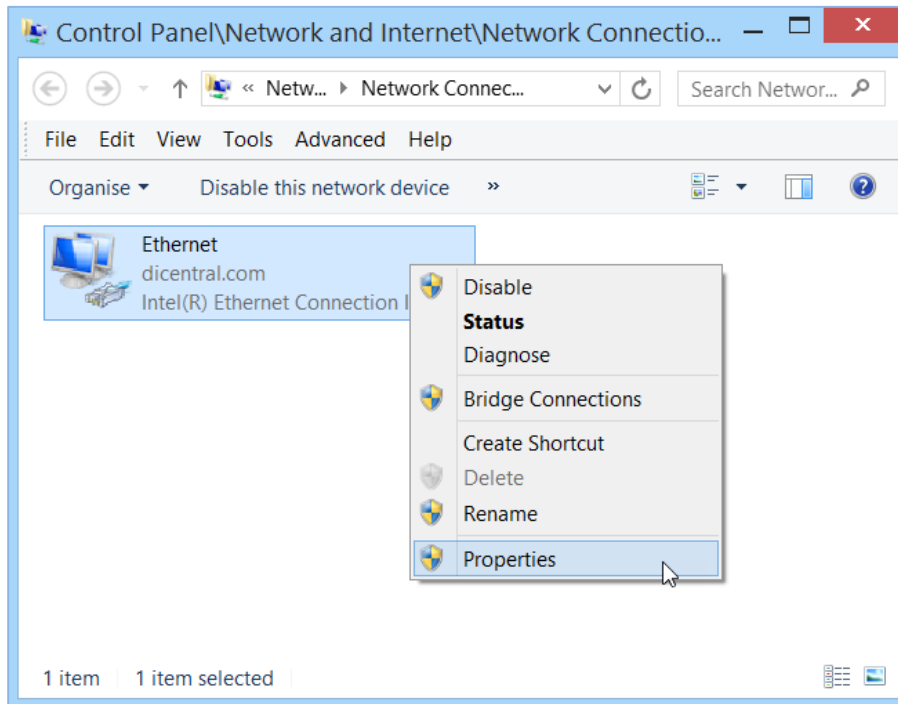
2. Click the **Network and Sharing Center** option.

The **basic network information and set up connections** window is displayed.



3. On the left-side menu, click **Change adapter settings**.

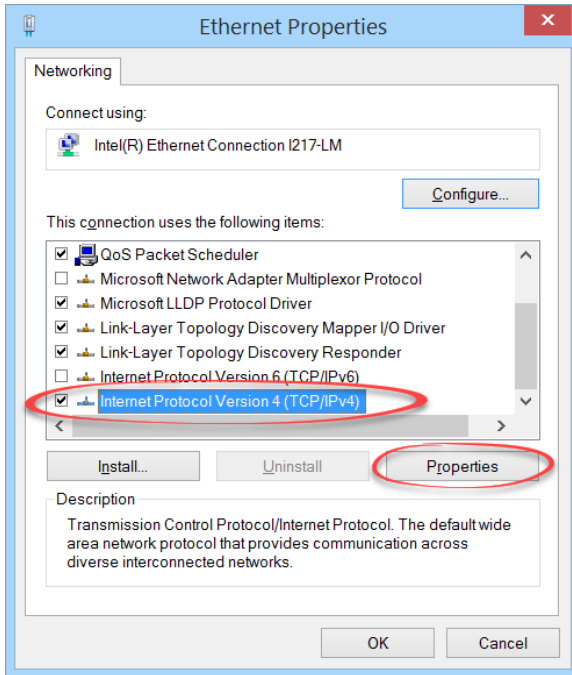
The **local area network connections** are displayed.



4. Next, right-click on your **network icon**, and then select **Properties**.

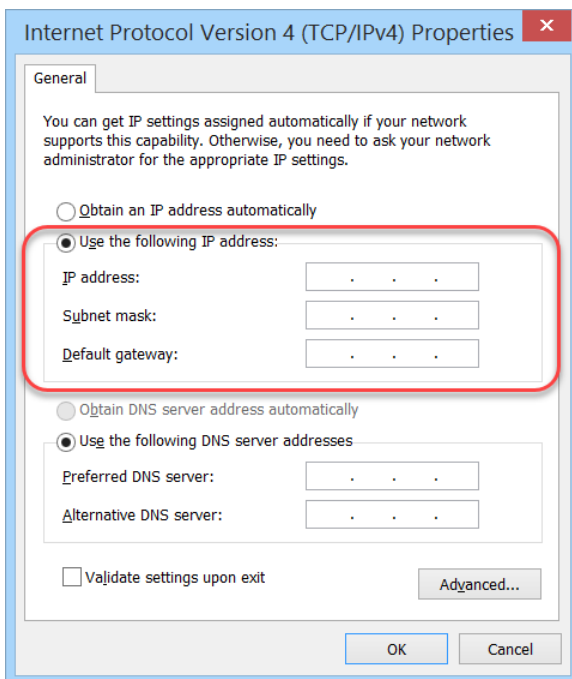
NOTE The name of your network will be different.

The network **Properties** window is displayed.



5. Scroll down the list, select **Internet Protocol Version 4 (TCP/IPv4)**, and then click the **Properties** button.

The **Internet Protocol** window is displayed.



6. Click the **User the following IP address** radio button, and then type the **IP address**, **Subnet mask**, and **Default gateway** numbers that were assigned to you by your IT department. Click **OK**.